

FALL 2016

*Professional
Foodservice Standards.*

Professional Industry Choice.

winco[®]

**NEW PRODUCTS BROCHURE
LIST PRICE**



TABLETOP



DCCR-3S

DCCR-3C



DCFP-4S

DCFP-4C



DCSC-3S

DCSC-3C



DCSP-3S

DCSP-3C



DCCR-3S & DCL-375



DCL-35



Artfully present single-serve portions in Winco's copper and stainless steel finished tri-ply mini-cookware.

- ◆ Tri-ply construction works on all heat sources
- ◆ 18/8 stainless steel cookware surface for superior cooking performance
- ◆ Aluminum core provides efficient heat distribution
- ◆ Stainless steel or copper exterior surface is induction ready

TRI-PLY MINI COOKWARE WITH COPPER EXTERIOR

ITEM	DESCRIPTION	UOM	CASE	LIST PRICE
DCCR-3C	3.75" Casserole, 15oz	Each	30	38.71
DCFP-4C	4" Fry Pan, 5oz	Each	30	26.61
DCSC-3C	3" Saucier, 5oz	Each	30	28.04
DCSP-3C	3.5" Sauce Pan, 11oz	Each	30	32.46

TRI-PLY MINI COOKWARE WITH STAINLESS STEEL EXTERIOR

ITEM	DESCRIPTION	UOM	CASE	LIST PRICE
DCCR-3S	3.75" Casserole, 15oz	Each	30	28.86
DCFP-4S	4" Fry Pan, 5oz	Each	30	19.92
DCSC-3S	3" Saucier, 5oz	Each	30	20.66
DCSP-3S	3.5" Sauce Pan, 11oz	Each	30	23.40

TRI-PLY MINI COOKWARE LIDS

ITEM	DESCRIPTION	UOM	CASE	LIST PRICE
DCL-35	Lid for 3.5" DCSP, Sauce Pan	Each	10/50	10.15
DCL-375	Lid for 3.75" DCCR, Casserole	Each	10/50	10.10

CARBON STEEL COOK & SERVE WARE

These Spanish-made, carbon steel fry pans are ideal for adding a rustic look to fresh-cooked eggs or displaying individual Mediterranean dishes!

ITEM	DESCRIPTION	UOM	CASE	LIST PRICE
CSPP-4	4-3/4", Polished	Each	6	11.53
CSPP-4E	4-3/4", Enameled	Each	6	21.28



4-3/4" Dia. INDIVIDUAL SERVING SIZE

AVAILABLE IN NOVEMBER 2016



CSPP-4



ENAMELED

CSPP-4E

MARBLE & WOOD SERVING BOARDS

Add the rustic feel to any setting from buffets to sit-down dining. Ideal for cheese, charcuterie, other appetizers, and desserts.

- ◆ The balance of white marble and acacia wood is perfect in both sophisticated and rustic settings
- ◆ Elegantly serve cheese plates, charcuterie, and other hors d'oeuvres
- ◆ Marble's cool surface is ideal for serving cheeses and fruits

ITEM	DESCRIPTION	UOM	CASE	LIST PRICE
SBMW-117	9" x 7" Board w/ 2-1/2" Hdl	Each	6	23.58
SBMW-156	11-1/2" x 6" Board w/ 4-3/8" Hdl	Each	6	25.07
SBMW-157	10-3/4" x 7" Board w/ 4-1/2" Hdl	Each	6	26.85



SBMW-117



SBMW-156



SBMW-157

CAST IRON CASSEROLE WOK

- ◆ Authentic cast iron wok in mini tabletop serving size

ITEM	DESCRIPTION	UOM	CASE	LIST PRICE
CSW-75	7" Dia. x 2"H Cast Iron Casserole Wok	Set	12	26.04



NON-STICK COATING

CSW-75

TABLETOP



GOB-16S
3-PIECE SET



G-104S
3-PIECE SET



OIL & VINEGAR CRUETS

Also a great way to bottle and serve sauces, olive oil and light syrups.

ITEM	DESCRIPTION	SIZE	UOM	CASE	LIST PRICE
GOB-8	Square Oil Bottle w/ Lid (Only)	8 Oz	Each	24	4.61
WH-8	Chrome Plated Rack, Fits GOB-8		Each	48	6.86
GOB-8S	2 Square Oil Bottles w/ Lid & Chrome-plated Rack	8 Oz	Set	12	21.62
GOB-16	Square Oil Bottle w/ Lid (Only)	16 Oz	Each	12	5.32
WH-16	Chrome Plated Rack, Fits GOB-16		Each	24	7.96
GOB-16S	2 Square Oil Bottles w/ Lid & Chrome-plated Rack	16 Oz	Set	12	17.67



CRUETS & HOLDER SET

ITEM	DESCRIPTION	SIZE	UOM	CASE	LIST PRICE
G-104S	2 Square Oil Bottles w/ Lid & Chrome-Plated Rack	6 Oz	Set	12	6.45

DINING SERVICE



CONDIMENT DISPENSER

Ideal for busy bars, food stands, convenient stores, or fast-food service. Removable plastic inserts allow for easy cleaning.

- ◆ Durable 18/8 stainless steel
- ◆ Heavy-duty pump ideal for high-volume restaurant environment
- ◆ 2 quart capacity per pump insert
- ◆ Overall dimensions: 11.5"L x 11"W x 16.5"H



PKTS-2D

ITEM	DESCRIPTION	UOM	CASE	LIST PRICE
PKTS-2D	Condiment Dispenser with 2 Standard Pumps	Set	2	467.79



Chic leatherette menu covers provide an elegant yet durable display for full service or fast casual restaurants alike. Now, Winco's refined double-sided stitched menu covers offer the look of a customized menu without the customization wait times. A timeless style in a full collection to complement any décor.

BAR MENU COVER

- ◆ Features secure interior picture corners
- ◆ Great for dessert and wine menus
- ◆ LMS-414BK fits 4-1/2" x 14" paper

ITEM	DESCRIPTION	COLOR	UOM	CASE	LIST PRICE
LMS-414BK	Bar Size	Black	Each	50	9.79



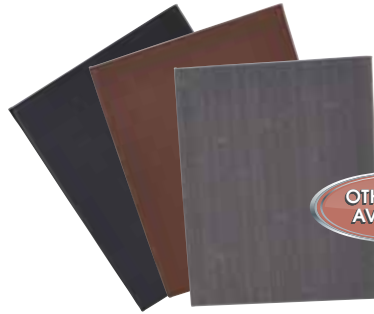
LMS-414BK



Picture corners



FULL menu cover styles available in 3 colors



OTHER SIZES AVAILABLE

GUEST ORDER HOLDER

- ◆ Excellent way to take customer's orders
- ◆ Guest order holder comes with an elastic pen loop
- ◆ Fits check sizes up to 4-1/4" x 8"

ITEM	DESCRIPTION	UOM	CASE	LIST PRICE
CHK-2K	Elastic Pen Loop w/ 5-1/4" x 8-1/2"	Each	12/96	4.80



CHK-2K

COUNTERFEIT DETECTION PEN

- ◆ Fast and easy way to detect fraudulent bills
- ◆ Great for the busy retail or restaurant environment
- ◆ Can be used with other counterfeit detection methods
- ◆ Pack comes with two pens

ITEM	DESCRIPTION	UOM	CASE	LIST PRICE
PPM-2	Counterfeit Detection Pen (2 pens/pack)	Pack	18/72	6.18



PPM-2





ACCELMIX™
by Winco®

ADD POWER & PERFORMANCE TO YOUR BAR



XLB-1000

COUNTERTOP ELECTRIC BLENDER

- ◆ High-performance motor with impact-resistant stainless steel blades
- ◆ Extra large 68oz. capacity, break resistant BPA-Free Tritan™ container
- ◆ Simple "PULSE" and "ON /OFF" paddle controls and variable speed control dial
- ◆ Removable container cover and cap for adding ingredients mid-cycle, as well as pressure reduction when blending hot foods
- ◆ Heat-resistant container up to 226°F
- ◆ Includes a 11-1/2" tamper for blending solid foods
- ◆ Dimensions: 20"L x 9"W x 10"D
- ◆ Container dimensions: 11-1/2"H x 6-5/8"W x 6-1/4"D
- ◆ 120V, 1450W

ITEM	DESCRIPTION	UOM	CASE	LIST PRICE
XLB-1000	Electric Blender with Paddle Controls	Set	4	381.35



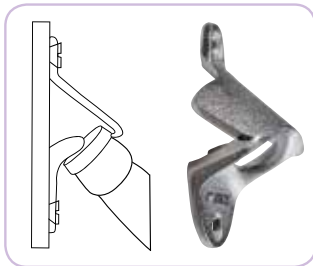
WALL-MOUNT BOTTLE OPENER

Ideal for busy bars where searching for hand-held bottle openers is not an option. Can be mounted to walls or bar counter fixtures.

- ◆ Made of sturdy cast metal
- ◆ Wall-mounted for easy accessibility
- ◆ Includes mounting screws



CO-402



CO-402 In use / Side Profile

ITEM	DESCRIPTION	UOM	CASE	LIST PRICE
CO-402	3-1/4"L x 2-3/4"W	Each	24/144	5.52

BOTTLE CAP HOLDER

ITEM	DESCRIPTION	UOM	CASE	LIST PRICE
BCH-14	5-1/2" L x 3-1/2" W x 13-3/4" H	Each	24	17.50



BCH-14
Bottle Cap
Holder



New Item



ACERO FORGED CUTLERY



Our Acero forged series offers exceptional commercial quality at never before seen prices.

- ◆ Fully forged, full-tang construction
- ◆ Constructed of X50 Cr MoV15 German steel
- ◆ 6-spot advanced polishing allows for a more comfortable grip
- ◆ Unique POM injection molded handles help to achieve balanced weight distribution for ease of use
- ◆ Easy edge maintenance and rapid sharpening
- ◆ NSF listed



AVAILABLE IN NOVEMBER 2016

ITEM	DESCRIPTION	BLADE	UOM	CASE	LIST PRICE
KFP-30	Peeling Knife	2-3/4" L	Each	6/72	10.84
KFP-51	Tomato Knife	5" L	Each	6/72	13.58
KFP-74	Fillet Knife, Flexible	7" L	Each	6/36	23.32

**X50 CR MOV15
GERMAN STEEL
FULLY FORGED-FULL TANG
UNIQUE POM HANDLE**



KFP-30

KFP-51

KFP-74



Fully forged blade



FOUR-STAGE KNIFE SHARPENER

No matter if you prefer standard or Asian styled knives, Winco's Four-Stage Sharpener offers one tool to do the job. Designed for the commercial kitchen, the wide, rubberized base provides the stability for any busy chef to sharpen their favored knife.

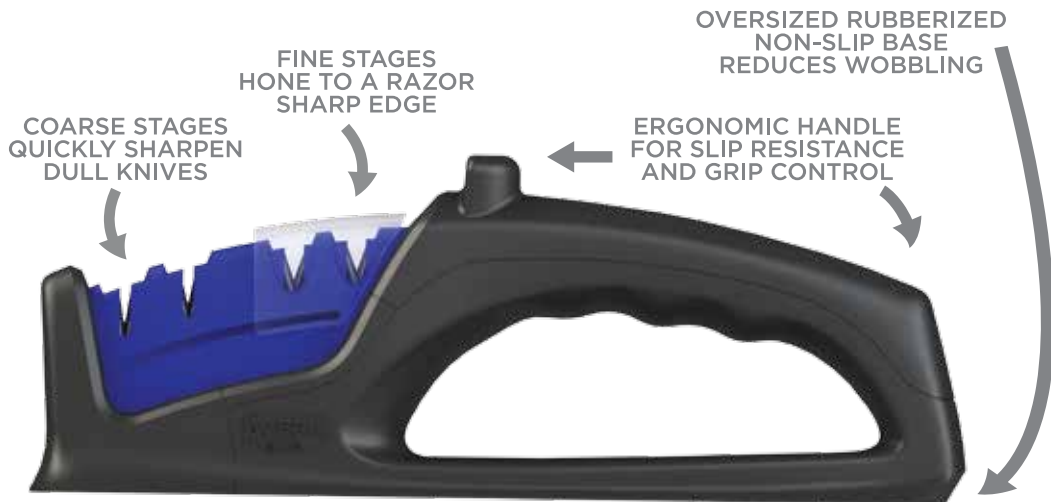
- ◆ For either standard or Asian style knives, coarse stages quickly sharpen dull knives, while fine stages hone to a razor sharp edge
- ◆ Reduced wobbling - the safest sharpener with oversized non-slip base
- ◆ Most ergonomic handle available for comfort, slip-resistance, and grip control



AVAILABLE IN NOVEMBER 2016

KSP-4

ITEM	DESCRIPTION	UOM	CASE	LIST PRICE
KSP-4	9-7/8"L x 2-5/8"W x 3-3/4"H	Each	12/24	31.69



PROFESSIONAL CUTLERY

HIGH-HEAT NYLON HANDLE TURNERS

NSF. Winco's popular turners now come in a high-heat, nylon version! Able to withstand heat up to 500°F, there is no need to worry about placing these turners grill-side, or accidentally on the grill!

- ◆ Stainless steel turners and spatulas
- ◆ Comfort slip-free, ergonomic handle reduces hand fatigue
- ◆ Satin finish blade
- ◆ Dishwasher safe
- ◆ NSF listed



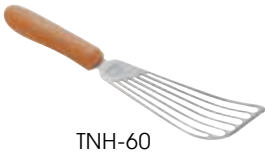
HIGH-HEAT ORANGE NYLON ERGO HANDLE

COOL HEAT



DESCRIPTION	BLADE SIZE (LxW)		UOM	CASE	ITEM	LIST PRICE
Turner	8" x 4"	*	Each	12/48	TNH-42	15.67
Fish Spatula	6-3/4" x 3-1/4"		Each	12/144	TNH-60	9.52
Hamburger Turner	5-1/8" x 2-7/8"	*	Each	12/72	TNH-61	8.15
Extra Heavy Turner, Cutting Edge Blade	5" x 6"	*	Each	12/48	TNH-63	17.04
Square Edge Turner	6-1/4" x 3"	*	Each	12/72	TNH-64	11.36
Square Edge Turner	7-1/4" x 3"	*	Each	12/48	TNH-70	12.62
Flexible Turner	8-1/4" x 2-7/8"	*	Each	12/48	TNH-90	8.37
Flexible Turner (Perforated Blade)	8-1/4" x 2-7/8"	*	Each	12/48	TNH-91	9.03

*Measurements reflect blade size not including the offset



SPATULAS ALSO AVAILABLE IN BLACK, WHITE, & WOOD HANDLES



FRENCH-STYLE FRY PANS

The Spanish-made, French-style fry pan is ideal for high-heat cooking. Suited for long pre-heating and searing.

- ◆ Thick, high quality carbon steel pan, allows for long pre-heating at high temperatures; suitable for searing
- ◆ Riveted flat handle
- ◆ Made in Spain

ITEM	DESCRIPTION	UOM	CASE	LIST PRICE
CSFP-7	7-7/8"	Each	1	17.95
CSFP-8	8-5/8"	Each	1	20.08
CSFP-9	9-1/2"	Each	1	26.90
CSFP-11	11"	Each	1	31.89
CSFP-12	12-5/8"	Each	1	39.06

*Replaces former FSFP-Series



CSFP-7

PAELLA PANS

These Spanish-made carbon steel pas are ideal for the creation and display of authentic paella dishes, roasting meat, making stir-fry, and much more!

ITEM	DESCRIPTION	FINISH	UOM	CASE	LIST PRICE
CSPP-7	7-7/8"	Polished	Each	6	10.21
CSPP-11	11"	Polished	Each	6	12.62
CSPP-14	14-1/8"	Polished	Each	6	20.71
CSPP-23	23-5/8"	Polished	Each	4	66.48
CSPP-35	35-1/2", 4 Handles	Polished	Each	1	225.21
CSPP-11E	11"	Enameled	Each	6	19.22
CSPP-14E	14-1/8"	Enameled	Each	6	33.39
CSPP-23E	23-5/8"	Enameled	Each	4	93.22

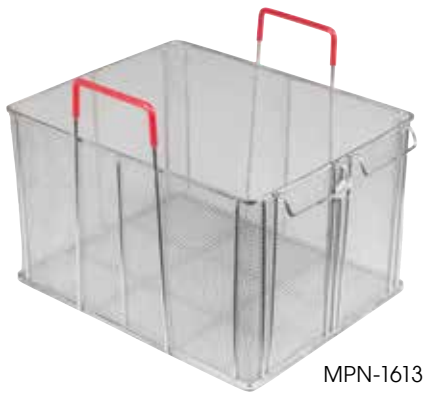


CSPP-11



CSPP-14E

PROFESSIONAL COOKWARE



MPN-1613

BULK PASTA BASKET

- ◆ Made of durable 18/8 stainless steel
- ◆ Plastic coated handles are temperature rated up to 250°F
- ◆ Suitable for cooking all types of pasta in bulk

ITEM	DESCRIPTION	UOM	CASE	LIST PRICE
MPN-1613	16-1/4"L x 12-7/8"W x 10"H	Each	2	137.15



FOOD STORAGE

PL-36NC



PL-3N



DOUGH BOX & COVER

- ◆ Boxes stack tight to maintain product freshness
- ◆ Great for storing and proofing dough
- ◆ Reinforced structure resists breakage or bending over time
- ◆ Made of durable polypropylene

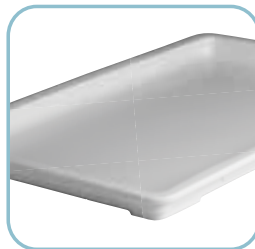
ITEM	DESCRIPTION	UOM	CASE	LIST PRICE
PL-3N	Dough Box, 25-1/2" x 17-1/2" x 3", PP	Each	6	26.75
PL-36NC	Cover for PL-3N	Each	12	17.20



Stackable



Reinforced edges & corners



Lid can be used as tray



Seamless fit for extra fresh storage needs

ICE ONLY CONTAINERS



FCW-SERIES



FCW-20L



"ICE ONLY" STORAGE CONTAINERS

ITEM	DESCRIPTION	UOM	CASE	LIST PRICE
FCW-10ICE	10 Gallon Container, Ice Only	Each	6	28.18
FCW-20ICE	20 Gallon Container, Ice Only	Each	6	57.20
FCW-10L	Lid for FCW-10ICE	Each	24	6.04
FCW-20L	Lid for FCW-20ICE	Each	12	9.82

PIZZA SUPPLIES

PIZZA SERVING TONGS

Gone are the days of your customers burning fingers on slices of fresh, hot pizza! Winco's Pizza Serving Tongs offers a sanitary way to serve not only piping hot pizza, but also pie and any other food served by the slice!

- ◆ Easily grab-n'-serve a single pizza slice, a piece of pie, and more!
- ◆ Wedge-shaped pie server with grabbing arm holds content more securely
- ◆ Sanitary serving solution
- ◆ Made of durable 18/8 stainless steel
- ◆ Dishwasher safe

ITEM	DESCRIPTION	UOM	CASE	LIST PRICE
PZG-6	5-1/2" x 4-1/2" Blade	Each	12/48	10.95



PZG-6



PZG-6 In use

PIZZA HEAT SINK

Say good-bye to burnt crusts and undercooked pizza centers! Place Winco's non-stick pizza heat sink in the center of your deep-dish pizzas to evenly distribute heat and shorten baking time.

- ◆ Delivers heat to the center of the pizza for even baking on deep dish and more.
- ◆ Shorten baking time

ITEM	DESCRIPTION	UOM	CASE	LIST PRICE
APHS-7	Aluminum Pizza Heat Sink with Non-stick coating, 6-3/4" diameter, 22 pins	Each	36	53.50



APHS-7

STEAM TABLE PAN

NSF STEAM TABLE PAN

- ◆ Winco offers the most complete collection of steam table pans in the industry
- ◆ Anti-jamming pans available in four gauges, straight sided pans available in standard weight
- ◆ Every gauge weight is made of 18/8 stainless steel
- ◆ NSF listed

ITEM	SIZE	GAUGE	DEPTH	UOM	CASE	LIST PRICE
SPJH-906GN	1/9-Size GN pan	22	6"	Each	12/24	10.92

*Only in Winco®

OTHER SIZES AVAILABLE



NEW SIZE

ADD 30% MORE COUNTER CAPACITY

SPJH-906GN



BAKEWARE



ALXP-2216H



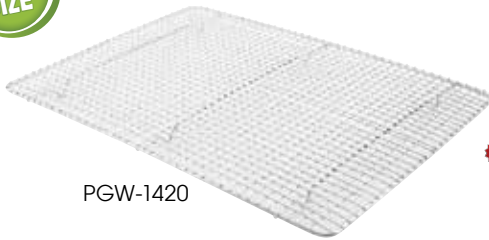
Closed bead

ALUMINUM SHEET PANS

Whether they are reinforced with galvanized wire or extra heavy-duty open bead, Winco® sheet pans can be counted on to hold their shape in high oven temperatures during baking, roasting, or broiling.

- ◆ Closed bead with galvanized wire for rust resistance and reinforcement
- ◆ Made of 3003 aluminum

ITEM	DESCRIPTION	SIZE	GAUGE	UOM	CASE	LIST PRICE
ALXP-1310H	1/4-Size Closed Bead	10" x 13"	18	Each	24	8.12
ALXP-2216H	2/3-Size Closed Bead	16" x 22"	18	Each	12	16.05



PGW-1420

SHEET PAN WIRE GRATES

- ◆ Footed to elevate food to keep from sticking to sheet pan
- ◆ Can also be used as a cooling or icing rack
- ◆ Chrome plated

ITEM	DESCRIPTION	SIZE	UOM	CASE	LIST PRICE
PGW-2416	For Full-Size Sheet Pan	16" x 24"	Each	12/24	10.92
PGW-1420	For 2/3-Size Sheet Pan	14" x 20"	Each	12/24	8.56
PGW-1216	For 1/2-Size Sheet Pan	12" x 16-1/2"	Each	12/48	6.56



ACP-062



ALUMINUM LAYER CAKE PANS

ITEM	DESCRIPTION	UOM	CASE	LIST PRICE
ACP-062	6" Dia. x 2" Deep	Each	6/36	3.31
ACP-082	8" Dia. x 2" Deep	Each	6/36	6.04
ACP-083	8" Dia. x 3" Deep	Each	6/36	7.08
ACP-092	9" Dia. x 2" Deep	Each	6/36	7.00
ACP-093	9" Dia. x 3" Deep	Each	6/36	8.92
ACP-102	10" Dia. x 2" Deep	Each	6/36	7.98
ACP-103	10" Dia. x 3" Deep	Each	6/36	10.37
ACP-122	12" Dia. x 2" Deep	Each	6/36	10.59
ACP-123	12" Dia. x 3" Deep	Each	6/24	12.73

BAKEWARE

DELUXE HARD ANODIZED ALUMINUM CAKE PANS

- ◆ 1.0mm thickness, 18 gauge

ITEM	DESCRIPTION	UOM	CASE	LIST PRICE
 HAC-042	4" Dia. x 2" Deep	Each	6/24	8.42
 HAC-062	6" Dia. x 2" Deep	Each	6/24	11.77
HAC-082	8" Dia. x 2" Deep	Each	6/24	12.29
HAC-102	10" Dia. x 2" Deep	Each	6/24	16.76
HAC-122	12" Dia. x 2" Deep	Each	6/24	21.51
HAC-142	14" Dia. x 2" Deep	Each	6/24	26.56
HAC-162	16" Dia. x 2" Deep	Each	6/12	32.48



KITCHEN UTENSILS

COLANDERS

- ◆ Aluminum

ITEM	DESCRIPTION	CAPACITY	UOM	CASE	LIST PRICE
ALO-16H	16-1/8 Dia. x 8" Deep	16 Qt	Each	6	29.52



ALO-16H

STAINLESS STEEL SPAGHETTI STRAINERS

- ◆ 18/8 stainless steel
- ◆ Tri-riveted handle with helper hook that rests over rim of pot

ITEM	DESCRIPTION	UOM	CASE	LIST PRICE
SSS-3	8-1/2" Dia. x 4" Depth	Each	6/24	43.26



SSS-3

KITCHEN UTENSILS



SPBR-604

BUTTER ROLLER

- ◆ Standard 1/6 size steam table pan, fits into a 7" x 6-3/8" size opening
- ◆ Reduces butter and dressing waste
- ◆ Removable roller for easy cleaning
- ◆ Spreads butter quickly and evenly
- ◆ Sturdy stainless steel construction
- ◆ Designed for countertop access
- ◆ Ensures safe and sanitation food preparation

ITEM	DESCRIPTION	UOM	CASE	LIST PRICE
SPBR-604	Butter Roller 7" x 6-3/8"	Set	6	43.05

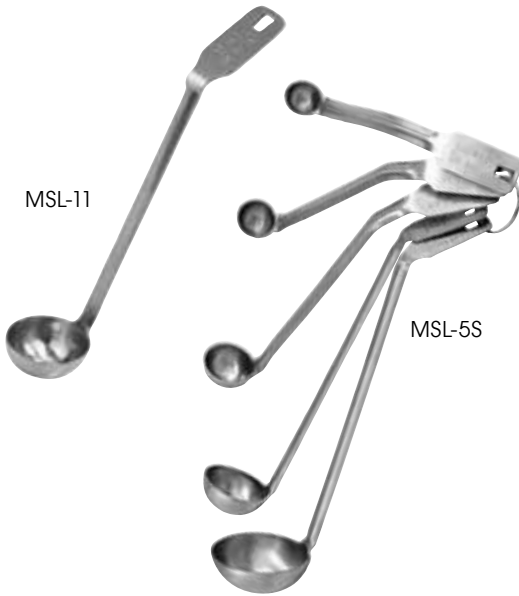


MINI LADLES

Easily portion and serve smaller quantities with mini ladles.

- ◆ Ideal for either measuring or serving small quantities
- ◆ Durable stainless steel construction

ITEM	DESCRIPTION	UOM	CASE	LIST PRICE
MSL-5S	Mini Ladle Set, 1/8 tsp, 1/4 tsp, 1/2 tsp, 1 tsp, 1 tbsps	Set	12/72	18.93
MSL-11	3/4 tbsps	Each	60/300	5.82



NEW COLORS

NYLON SPOONS

- ◆ Easy to clean one-piece construction
- ◆ Ideal for non-stick cookware
- ◆ Heat resistant up to 475°F (246°C)

ITEM	DESCRIPTION	UOM	CASE	LIST PRICE
NS-12B	12" Blue	Each	24/144	3.21
NS-12R	12" Red	Each	24/144	3.21
NS-12T	12", Tan	Each	24/144	3.21
NS-12W	12", Off-white	Each	24/144	3.21
NS-15B	15" Blue	Each	24/72	5.51
NS-15R	15" Red	Each	24/72	5.51
NS-15T	15", Tan	Each	24/72	5.51
NS-15W	15", Off-white	Each	24/72	5.51

FOOD PREPARATION

DIGITAL PORTION CONTROL SCALES

Quickly and accurately weigh out ingredients whether you are using grams, pounds, or ounces.

- ◆ Great portion control for consistency
- ◆ Ideal for quick restaurant environment

ITEM	DESCRIPTION	CAPACITY	UOM	CASE	LIST PRICE
SCAL-D20	2-1/2 x 1" Digital Screen	20Lbs/9Kg	Each	6	53.50



SCAL-D20

TORTILLA PRESSES

- ◆ Traditional press with excellent leverage
- ◆ Integrated handle allows for easy open and removal of corn and flour tortillas
- ◆ Also great for enchiladas and quesadillas

ITEM	DESCRIPTION	UOM	CASE	LIST PRICE
TPC-8A	8" Dia. Aluminum, Non-Stick	Each	6/12	39.61
TPC-8C	8" Dia. Cast Iron	Each	4	39.12

AVAILABLE IN
NOVEMBER 2016



TPC-8A

TPC-8C

JANITORIAL

WASTE RECEPTACLE

- ◆ Features tray top design with self-return 9"H door
- ◆ Fits up to 35 gallon capacity trash can
- ◆ Inside dimensions: 32"L x 21"W x 20-3/4"D
- ◆ Ships knocked-down
- ◆ Natural wood color

ITEM	DESCRIPTION	UOM	CASE	LIST PRICE
WR-35	44"L x 23-3/4"W x 23-1/2"D	Each	1	285.19



WR-35

ELECTRICS ONLY
AVAILABLE IN NJ

ACCELMIX™

by Winco®

ADD POWER &
PERFORMANCE TO
YOUR BAR



XLB-1000



COUNTERTOP BLENDER

MODEL	VOLTAGE	POWER (W)	AMPS	BASE (INCHES)		
				WIDTH	DEPTH	HEIGHT
XLB-1000	120V	1450W	12.1A	9"	10"	20"
				CONTAINER (INCHES)		
				6-5/8"	6-1/4"	11-1/2"

- ◆ High-performance motor with impact-resistant stainless steel blades
- ◆ Extra large 68oz. capacity, break resistant BPA-Free Tritan™ container
- ◆ Simple "PULSE" and "ON /OFF" paddle controls and variable speed control dial
- ◆ Removable container cover and cap for adding ingredients mid-cycle, as well as pressure reduction when blending hot foods
- ◆ Heat-resistant container up to 226°F
- ◆ Includes a 11-1/2" tamper for blending solid foods

ITEM	DESCRIPTION	UOM	CASE	LIST PRICE
XLB-1000	Electric Blender with Paddle Controls	Set	4	381.35

ELECTRICS ONLY
AVAILABLE IN NJ



ESH-1

COUNTERTOP STRIP HEATER

MODEL	VOLTAGE	POWER (W)	AMPS	DIMENSIONS (INCHES)		
				WIDTH	DEPTH	HEIGHT (adjustable)
ESH-1	120V - 60Hz	500W	4.2A	14"	25.5"	17.5" / 20" / 22.5"
				WITHOUT BASE		
				6"	24"	2.5"

Dimensions do not include accessory pieces.

- ◆ Includes undermount bracket and bolt set (ESH-UB) for optional mounting under shelves
- ◆ Extruded aluminum body for durability and cleanliness
- ◆ Tubular sheath heating element provides constant and reliable infrared heating
- ◆ Stand adjusts to three height positions: 17.5", 20", and 22.5"

ITEM	DESCRIPTION	UOM	CASE	LIST PRICE
ESH-1	Electric Strip Heater	Set	1	342.94

COUNTERTOP COTTON CANDY MACHINE



CCM-28



ELECTRICS ONLY
AVAILABLE IN NJ



POP-8B



POP-8R

POPCORN POPPERS

MODEL	VOLTAGE	POWER (W)	AMPS	WEIGHT (LB)	
CCM-28	120V - 60Hz	1080W	9A	26.5	
DIMENSIONS (INCHES)			OPTICAL CLEAR LID (CCM-28C)		
WIDTH	DEPTH	HEIGHT	WIDTH	DEPTH	HEIGHT
20.5"	20.5"	19"	21"	21"	14"

Dimensions does not include accessory piece.

- ◆ Simple, easy to use controls
- ◆ Includes sugar scooper for pouring floss sugar
- ◆ 20.5" diameter stainless steel bowl
- ◆ Spinner head accommodates 4 oz. of floss sugar
- ◆ Easy access to voltage meter and fuse for use on generators and power supplies
- ◆ Optional clear lid provides protection from wind and debris, sold separately

ITEM	DESCRIPTION	UOM	CASE	LIST PRICE
CCM-28	Electric Cotton Candy Machine	Set	1	729.77
CCM-28C	Confectionery Cotton Candy Machine Plastic Cover (for CCM-28)	Set	5	203.02

MODEL	VOLTAGE	POWER (W)	AMPS	WEIGHT (LB)
POP-8B	120V - 60Hz	1130W	9.5A	35.27
POP-8R		1350W	12A	54.01

MODEL	DIMENSIONS (INCHES)		
	WIDTH	DEPTH	HEIGHT
POP-8B	15.75"	14.75"	23"
POP-8R	22"	16.5"	30"

- ◆ 8 oz. stainless steel removable kettle
- ◆ Built in warmer light
- ◆ Removable crumb tray
- ◆ Tempered glass side panels
- ◆ Clear plexiglas doors and stainless steel fold-out tray for easy access

ITEM	DESCRIPTION	UOM	LIST PRICE
POP-8B	Electric Popcorn Popper, Black	Set	496.57
POP-8R	Electric Popcorn Popper, Red	Set	581.62

COUNTERTOP PIZZA DISPLAY MERCHANDISERS

ELECTRICS ONLY
AVAILABLE IN NJ



EDM-1



EDM-2

Lighted Display Panel



EDM-2PR
Optional Pretzel Rack

Translucent Plastic Display Signage for EDM-2 sold separately



EDM-2PZS



EDM-2PRS

MODEL	VOLTAGE	POWER (W)	AMPS	WEIGHT (LB)	DIMENSIONS (INCHES)		
					WIDTH	DEPTH	HEIGHT
EDM-1	120V - 60Hz	1800W	15A	70.5	23.75"	25.5"	27.75"
EDM-2		875W	7.3A	48.5	17.6"	18.1"	30.9"

EDM-1: Digital control of both temperature and humidity

- ◆ Forced air for convection heating
- ◆ Active humidity with water fill-tray
- ◆ Accommodates four full-size 18" pizzas

EDM-2: Passive humidity control with removable water tray

- ◆ Holds four 14" pizzas
- ◆ Optional pretzel rack, sold separately
- ◆ Lighted display panel for branded product
- ◆ Removable chrome tray

ITEM	DESCRIPTION	UOM	CASE	LIST PRICE
EDM-1	Electric Heated Merchandiser	Set	1	2,606.33
EDM-2	Electric Heated Merchandiser	Set	1	1,714.68
EDM-2PR	Optional Pretzel Rack	Set	1	74.07
EDM-2PZS	Pizza Sign 5-3/4"H x 16-1/8"H	Each	1	79.56
EDM-2PRS	Pretzel Sign 5-3/4"H x 16-1/8"H	Each	1	79.56

COUNTERTOP HEATED DISPLAY MERCHANDISERS

ELECTRICS ONLY
AVAILABLE IN NJ



HDM-13



HDM-36

LIGHTED



HDM-26



HDM-48



Control Panel

MODEL	VOLTAGE	POWER (W)	AMPS	WEIGHT (LB)	DIMENSIONS (INCHES)			SHELVING DIMENSIONS (INCHES)	
					WIDTH	DEPTH	HEIGHT	WIDTH	DEPTH
HDM-13	120V - 60Hz	850W	7.1A	46.75	13.6"	19"	26"	13.58"	19.06"
HDM-26		1050W	8.8A	73.85	26.6"			26.57"	19.06"
HDM-36		1200W	10.0A	91.5	36"			36.02"	19.09"
HDM-48		1650W	13.75A	117.95	48"			47.83"	19.06"

- ◆ Removable water pan helps control humidity
- ◆ 3 adjustable shelves inside, top can also be used as a shelf
- ◆ Lighted front display for branding visuals
- ◆ Visible thermometer gauge to ensure food keeps at proper temperatures
- ◆ Adjustable thermostat from 85°F to 195°F (30°C to 90°C)
- ◆ Front service and rear access doors

ITEM	DESCRIPTION	UOM	CASE	LIST PRICE
HDM-13	Heated Display Merchandiser, 120V, 850W, 13.5" Width	Set	1	1,094.66
HDM-26	Heated Display Merchandiser, 120V, 1050W, 26" Width	Set	1	1,399.19
HDM-36	Heated Display Merchandiser, 120V, 1200W, 36" Width	Set	1	1,514.41
HDM-48	Heated Display Merchandiser, 120V, 1650W, 48" Width	Set	1	1,816.20



DWL Industries Co.
65 Industrial Road
Lodi, NJ 07644



Prices effective through December 31, 2016

DWL Industries Co.

www.wincous.com

East Coast

65 Industrial Road
Lodi, NJ 07644

Tel. 1.888.946.2682
Fax. 1.888.946.2632

West Coast

14950-14952 Valley View Ave
La Mirada, CA 90638

Tel. 1.888.946.2652
Fax. 1.562.926.5678

Check your order status online at www.wincous.com